

2018

COMPANY PROFILE

 *ATBEL Technology Corp.*

JOHNSON HSIEH

ATBEL

2018/1/1



Company Name

ATBEL TECHNOLOGY CORP.

Address

6F-1. No.22, Ln. Wenhua St., Neihu District. Taipei, Taiwan.

Contact

Tel : 886-2-87518083 (Rep.) Fax : 886-87512032

Cell phone : 0928831235 E-mail : sales@atbel.com.tw

Web: <http://www.atbel.com.tw>

Established

25, June '2000.

Stockholder

Mr. D.H. Kuan (See Attach 1)

Mr. Johnson Hsieh

Mr. Manchew Liu

Mr. David Wei

Mr. Jason Liao

Certification

ISO 9001(OEM Factory)

Personal Organization

General Manager : 1 person

Marketing Manager : 1 person

Sales Manager : 1 person

Salesmen : 5 person

Engineer Manager : 1 person

R&D Engineer : 3 person

F.A.E. : 1 person

Secretary : 1 person

Assistant : 1 person

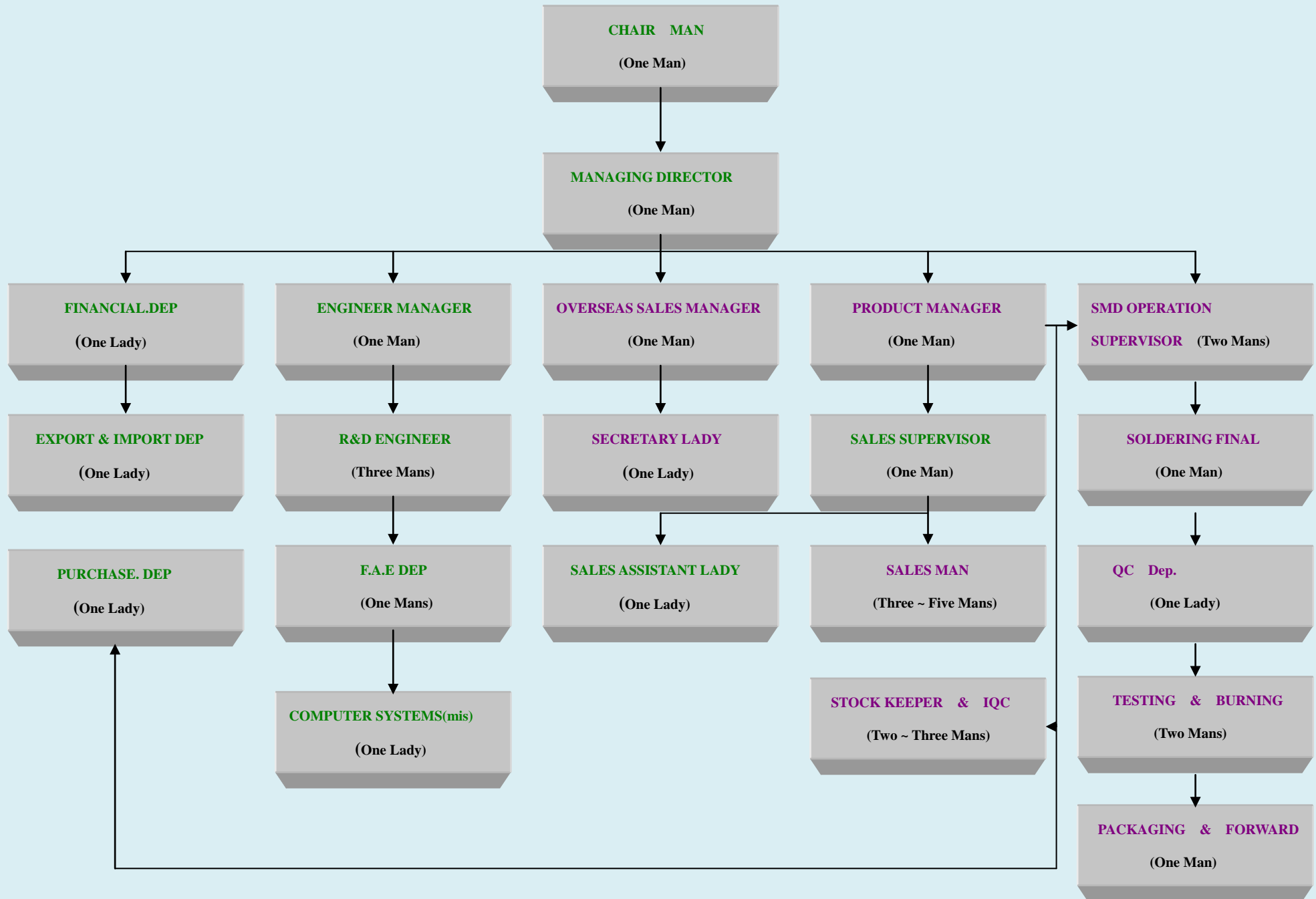
Accountant : 1 person

Production Dep : 11 person



R&D Dept :

ATBEL GROUP ORGANIZATION:



Main Business & Design Capabilities

Power Electronic Solution And Service For Taiwan And World Wide Market.

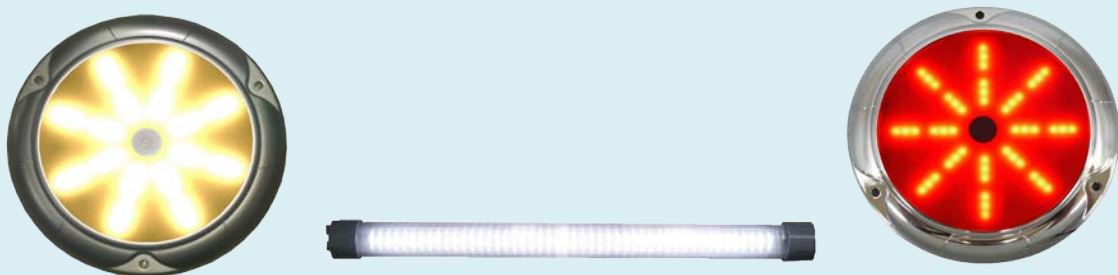
(A). DC to AC Inverter: for LCD panel/CCFL backlight



(B). DC to DC Converter: for LCD panel/LED backlight



(C). Vehicle LED Lighting:



(D). Power Management MCU Application & Total Solution:



Fiscal Year Selling Ratio

(A). DC to AC Inverter : 10%

(B). DC to DC Converter : 10%

(C). Vehicle LED Lighting : 30%

(D). Power Components : 50%



Production Dept:

Quality Assurance

- 1. Quality Policy**
- 2. QC Organization**
- 3. IN-Coming Quality Control Flow Chart**
- 4. Material Deficiency Report Flow Chart**
- 5. In-Process Quality Control Action**
- 6. Manufacture Process Flow Chart**
- 7. Corrective And Preventive Action Control Flow Chart**
- 8. Out-Going Quality Control Flow Chart**
- 9. Customer Complain Disposition Flow Chart**



Test Systems :

Quality Policy

1.Our Company policy:enviroment control. in-time Quality Control,precaution To avoid defect.

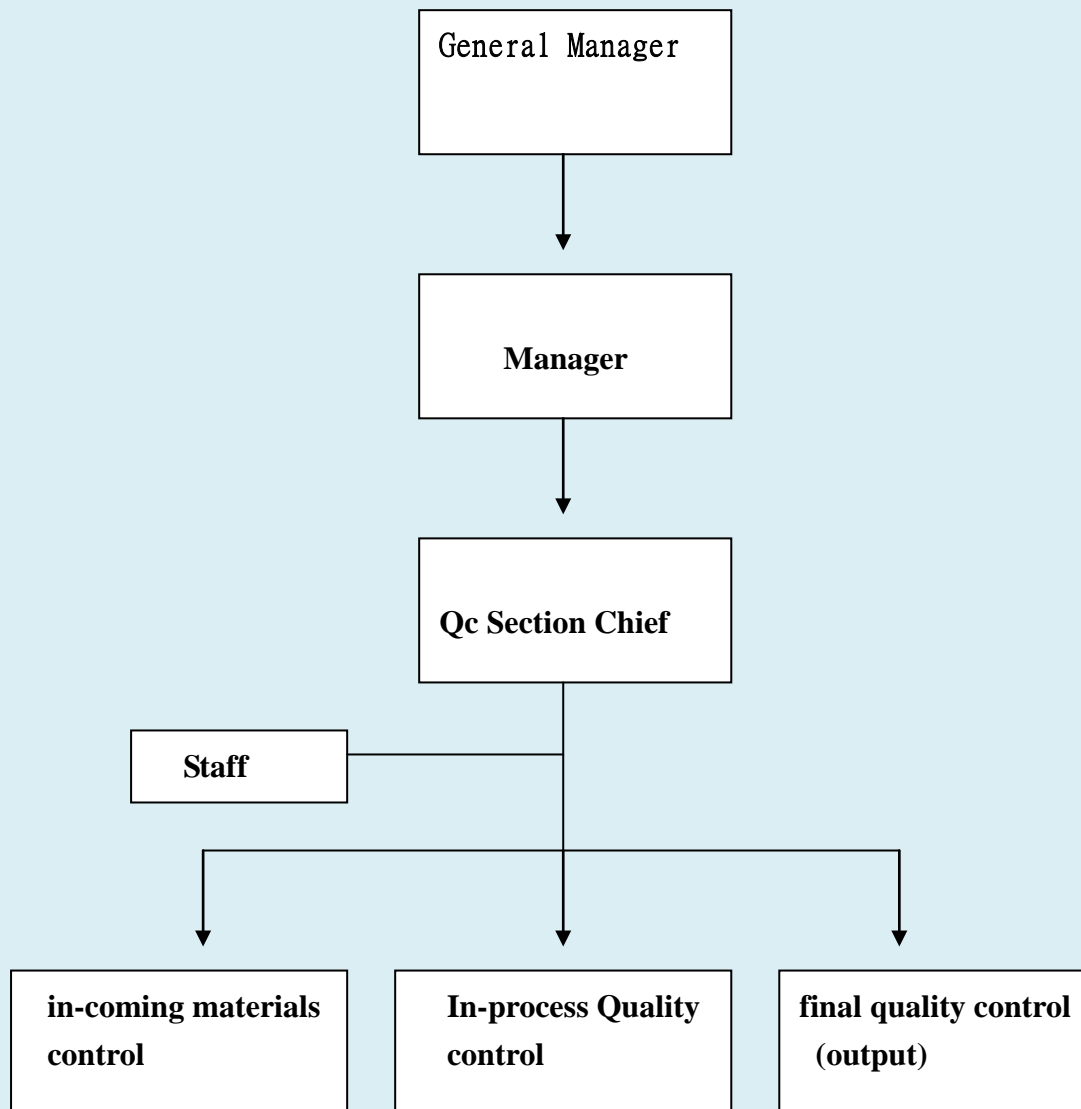
a. through our quality system,to meet the customer demand.

b. to educate employees on quality consensus.

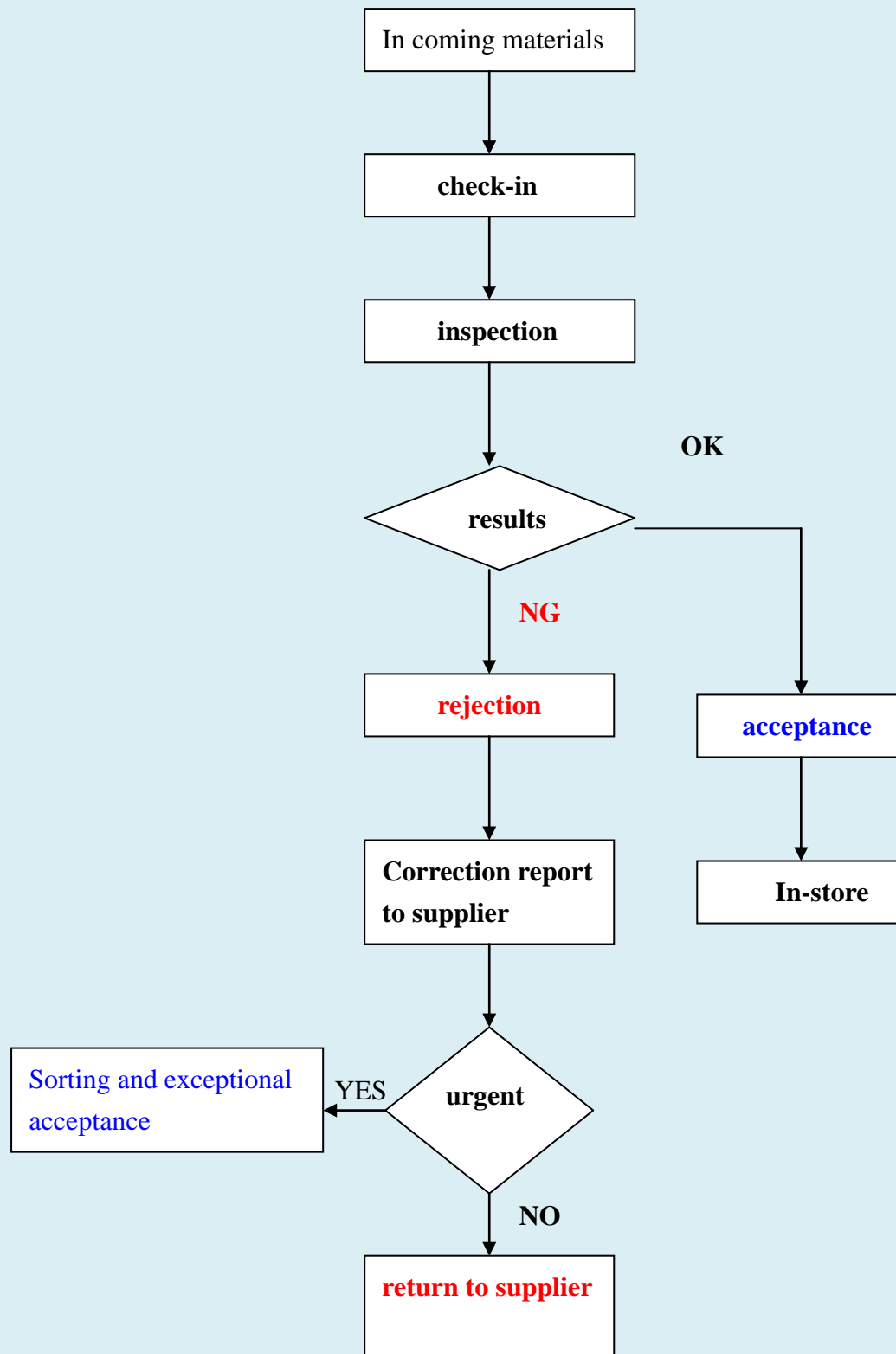
c. to provide good quality product & in time service that can shape company image and help company succeeded.

2.Our quality promise:One time for all.

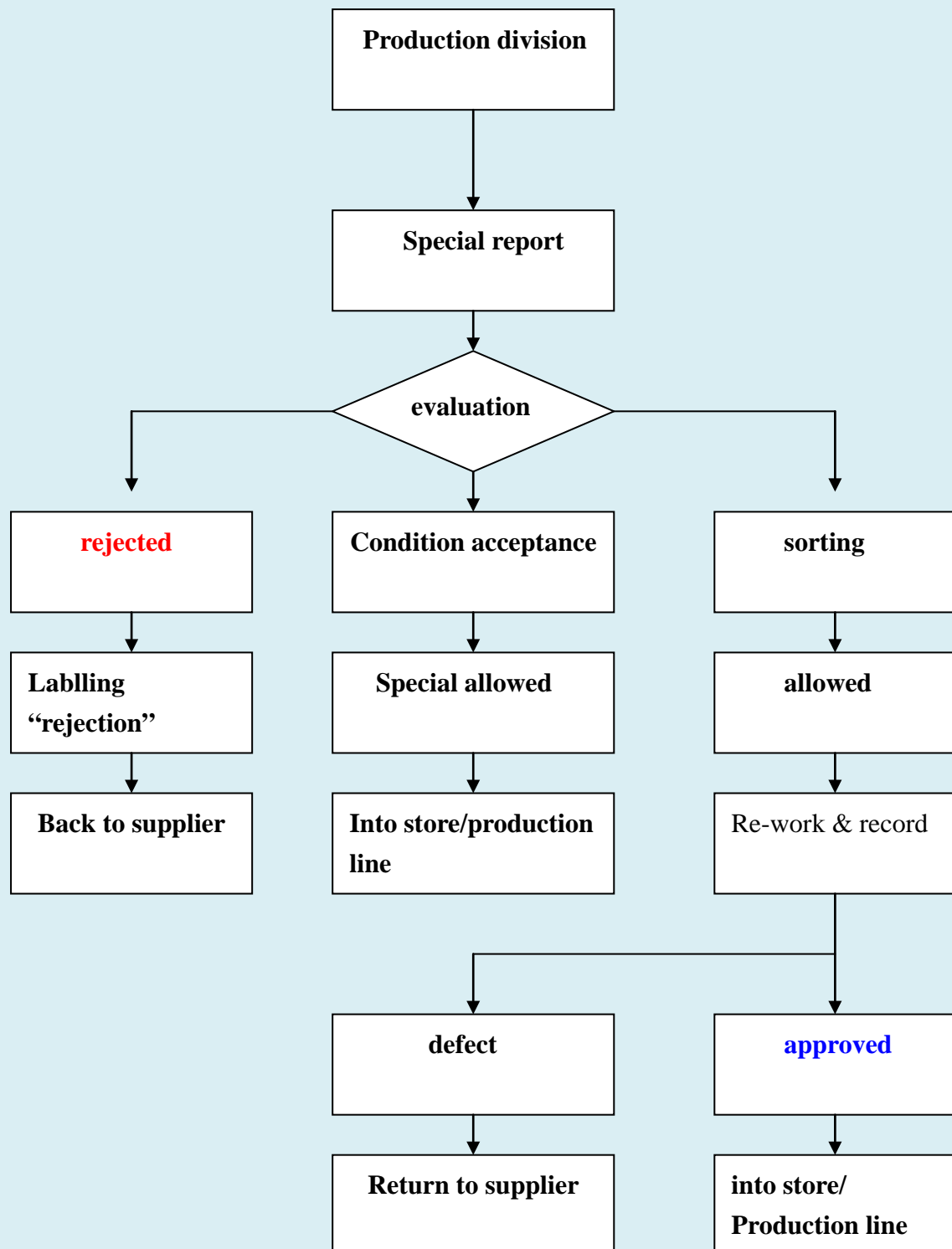
QC Organization



In-coming Quality Control Flow Chart



Material Deficiency Report Flow Chart



In-Process Quality Control Action

*** QUALITY REVIEW MEETING**

*** IN-PROCESS AUDIT FOR 5M(MEN MACHINE MATERIAL METHOD MANAGEMENT)**

*** LOT ACCEPTANCE SAMPLING INSPECTION FOR A/I BOARD ASS,Y AND CHASSIS (AQL: MAJOR=0.65% MINOR=1.5%)**

*** SOLDER WAVE DEFECT RATE TRACKING & CONTROL**

*** FIRST UNIT INSPECTION**

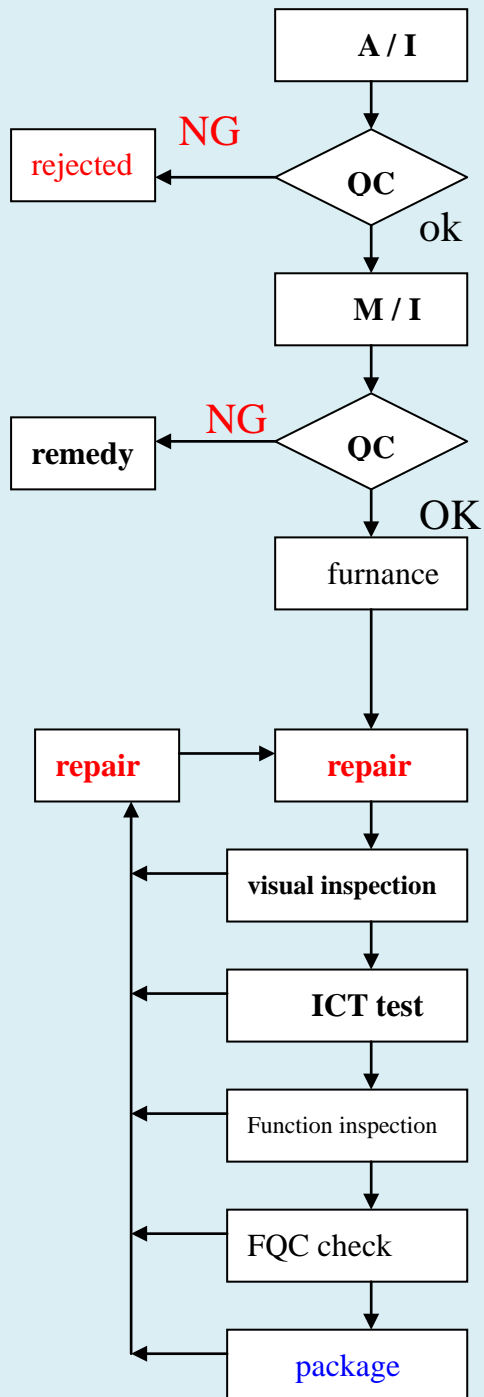
*** HIGHLIGHT FOR IN-PROCESS QUALITY ABNORMAL**



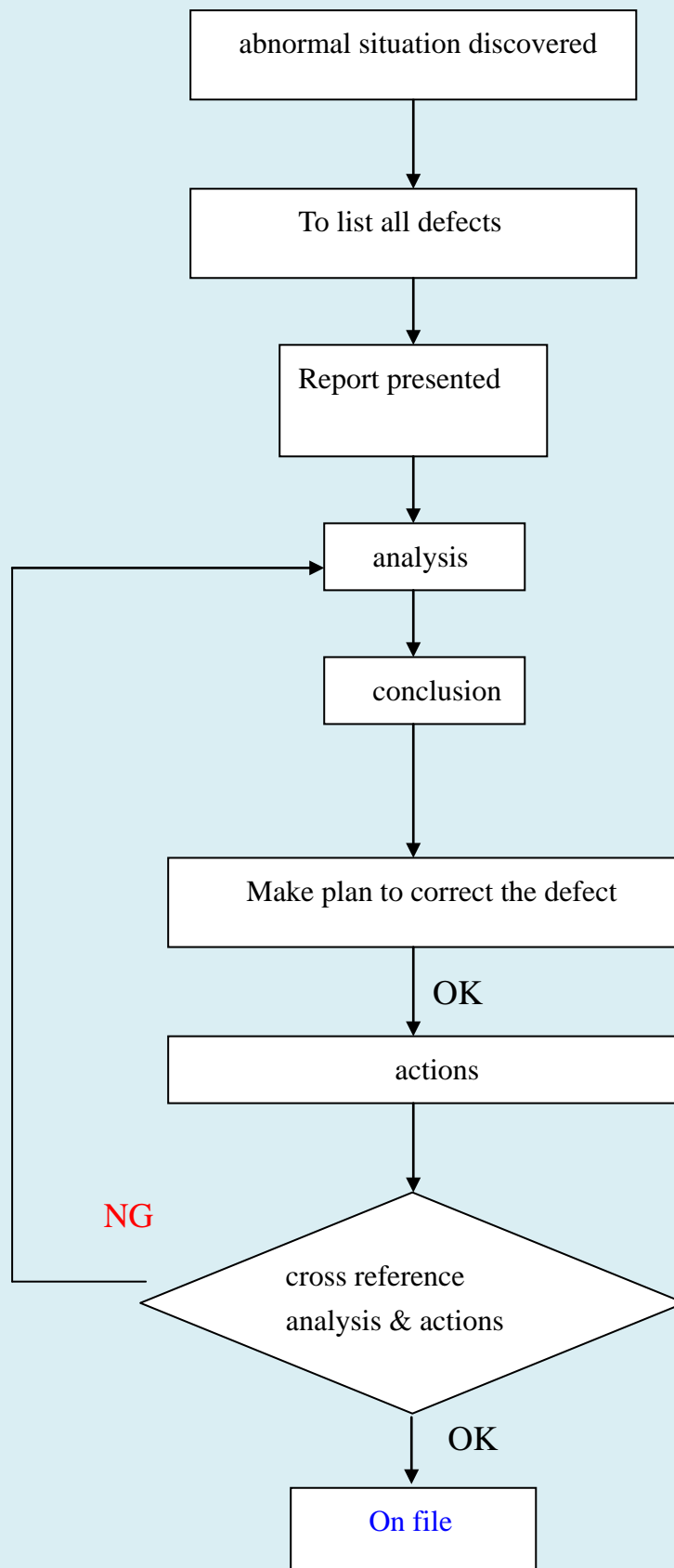
Quality Control Dept: One Line

Manufacture Process Flow Chart

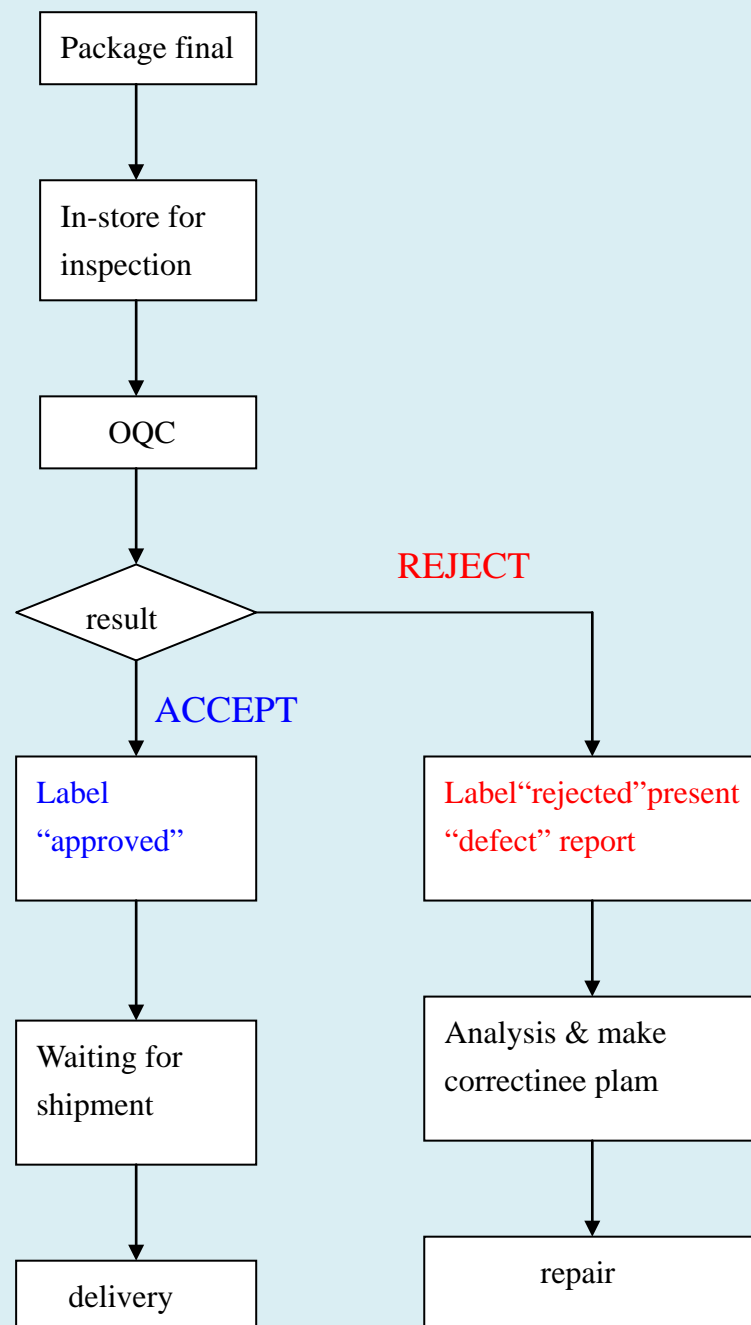
Flow Chart



Corrective And Preventive Action Control Flow Chart



Out-Going Quality Control Flow Chart



Customer Complain Disposition Flow Chart

Sequence	Department	customer	Management Division	QC Division	Sepcial team	Responsibility
1	complaint issued					
2	accepted					
3	analysis					
4	correction plan					
5	inform customer					
6	defect product					
7	follow-up					
8	on file					

How We Will Win

- **Growth**
 - **Growth in power management, broadband solutions via alliances, acquisitions and portfolio expansion**
- **Service**
 - **Total customer focused environment and culture**
- **Cost**
 - **Best-in-class process that drives lowest total cost**
- **Speed**
 - **Fast and focused in everything we do**

Customer List:

POS, Touch Screen

CASIO(Japan)
PHILIP(Taiwan)
SANYO(Japan)
TOTOKU(Japan)
DATAMODULE(Europe)
MSC (Europe)
TEXIM (Europe)
TVM
GVISION
PURITRON
PARTNER

IPC

AAEON
ADVANTECH
AXIOMTEK
QUANMAX
PROTECH
BOSER
NEXCOM

TVS, Gas Tube end users

Apple
IBM
HP
DELL
CISCO
Junipet
SHARP
Lenovo

FINACIAL STATUS

CAPITAL : US\$ 1,000,000.-

BANK : 1. FIRST COMMERCIAL BANK, PEITOU AREA
BRANCH

2. SUNNY BANK , SHIH PAI BRANCH

